



STAGE WAGON

YOUR VISION — OUR MISSION



SUSTAINABILITY

Frames reusable for HOAC stages, turntables, grandstands, etc.



SMOOTH DRIVING

Smooth starting and stopping as well as safe holding on slopes.



LOAD

Static 500 kg/m² and dynamic 250 kg/m².
More on request.



SPEED

Continuous regulation from 1 to 1000 mm per second.



LOW NOISE

Matched connections and quiet motors allow silent driving.



CONTROL

Radio control or integration with stage control possible.



Small and compact stage wagons are often used during performances to move decorations or people themselves. The Serveo IIA module impresses with its smooth and quiet driving and running behavior.

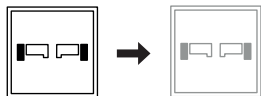
ADVANTAGES:

- > Control via mobile radio console or stage control
- > More sustainability through modularity of the HOAC® system frame
- > Up to 80 movements programmable, each drive up to 5 minutes
- > Inductive, optical or magnetic tracking systems

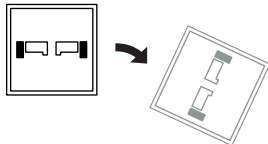
TECHNICAL DATA:

- > Frame: HOAC® system frame
- > Drive: Servo IIA or Mecanum
- > Height: 166 mm or 200 mm
- > Stop category: EN60204
- > Material decks: wood or individual
- > Material frame: aluminum
- > Load drive modul: 2-3 t

Linear motion



Curve motion



Rotation



INTEGRATED TURNTABLE LARGE STAGE WAGONS 3 IN 1 SYSTEM

The modularity of the 3 in 1 stage wagon system enables maximum flexibility. Yesterday as a stage-sized stage wagon, today as a turntable and tomorrow for moving a car across the stage. As a stage-sized stage wagon, it can be moved from the main stage to the side stages as needed.

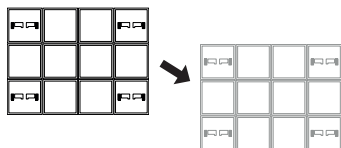
ADVANTAGES:

- > 3 in 1 stage wagon system
- > Integration into the stage control or mobile operating console
- > Programmable motions
- > More sustainability through modularity of the HOAC® system frame
- > Inductive, optical or magnetic track guidance system

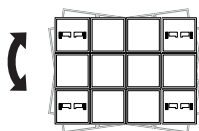
TECHNICAL DATA:

- > Frame: HOAC® system frame
- > Drive: Vektor IIIA or Mecanum
- > Height: ≥ 200 mm
- > Stop category: EN60204
- > Material decks: wood or individual
- > Material frame: aluminum
- > Load drive modul: 3 t

Stage motion



Rotation



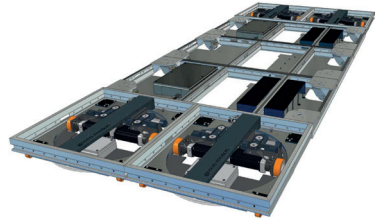
Single motion



DRIVES:

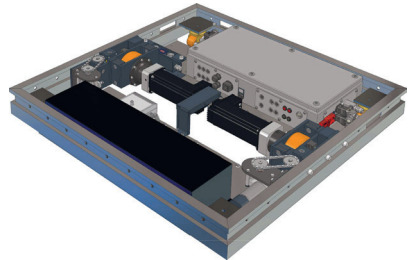
VECTOR IIIA

The patented Vector IIIA enables stage moving. The second travel drive provides twice the torque. Unlike the Mecanum drive, the running surface is very quiet, resulting from the homogeneous surface of the wheels.



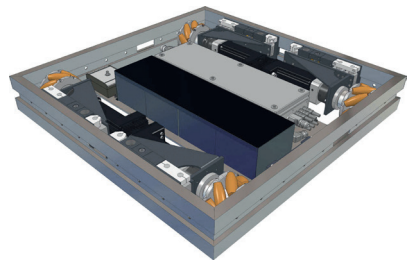
SERVO IIA

The compact Servo IIA drive is installed in a standard 1x1 meter frame and moves up to three tons per drive module. The master/slave principle makes it possible to couple up to 7 slave drive modules with one master drive - this saves material and costs.



MECANUM

Well-known from the industry, the Mecanum technology is mainly used on stage. It connects four drives in each 1 x 1 meter module. This enables both: linear and curved motion.



CONTROL:



INTEGRATION STAGE CONTROL

In addition to the use of a the mobile control panel VENIO, it is possible to realise an intergration into the UNICAN control system MOVEO.

DEUTSCHE OPER AM RHEIN

DUSSELDORF, GERMANY

After 20 years, the „Deutsche Oper am Rhein“ received a new mobile stage wagon with state-of-the-art technology. The aluminum wagon in the size of the stage can be lowered over the lifting podiums of the main stage to stage height. The integrated turntable can be used without additional work at any time. In addition, the 10 x 14 meter wagon is divided into 5 individual stage wagons of 2.5 x 14 meters. Those can then be controlled individually. The control of the stage wagon is integrated into the in-house UNICAN control system.

